



WCSHC Fall Forestry Field Day
Pg. 4

GREENSBORO ECHO
THE VOICE OF RURAL AMERICA
WINTER | NOVEMBER 2009 | FIRST EDITION

WCSHC's Conference in 35 Days

In less than 35 days, the Winston County Self Help Cooperative's 3rd Saving Rural America and Youth Conference convene on January 8-10, 2010 at the Louisville Coliseum in Louisville, MS. The 2010's Theme, "Opportunities in Changing Times" presents an avenue for farmers, youth, landowners, extension, USDA and others to gather under one roof to resolve rural America's social & economic problems. The 2010 conference features four ladies with 280 years of farming experiences will share their wisdom of overcoming obstacles and providing leadership in challenging times. The conference starts Friday @ 12:00pm with a variety of activities including educational workshops, fashion show, down home fish-fry and gospel singing. The youth conference begins Friday @ 3:00pm at the Imperial Palace located on Hwy 14, one mile west of Louisville. Saturday's event commences at 6:00am with continental breakfast. The morning session ends at 12:30pm with lunch & luncheon address. The afternoon session includes a historic tour of Philadelphia, MS where Civil Rights Workers: James Chaney, Andrew Goodman, and Michael Schwerner were murdered in 1964. The conference concludes on Sunday morning with a policy forum targeting the 2012 Farm Bill. Forum



Right-WCSHC Team Leader Frank Taylor conducts a workshop during the 2009 SRA & Youth Conference

WCSHC's Conference in 35 Days,

Continued on pg. 2

(SAVE THIS DATE) Saving Rural America Conference
January 8-10, 2010, at the Louisville Coliseum
Louisville, MS. Visit WCSHC.com for more information.

WCSHC.com

**LOOK
INSIDE**

WCSHC's Leadership Training	2
WCSHC receives 12 Heifers for Local Farmers.....	3
WCSHC Fall Forestry Field Day.....	4
A look inside of WCSHC.....	4
WCSHC's Fire Safety Workshop.....	5
Natural Resource Enterprises Workshop.....	5
WCSHC published 100th Edition.....	5
WCSHC NOVEMBER 2009 CANDID SHOTS.....	6
WCSHC's Fire Safety Workshop Photo Gallery.....	7

SAVING RURAL AMERICA

Announcements

- For more WCSH Youth Group info log on to **WCSHC.com**
- **(SAVE THIS DATE)** Saving Rural America Conference January 8-10, 2010, at the Louisville Coliseum-Louisville, MS. Visit **WCSHC.com** for more information.

WCSHC published 100th Edition

Winston County Self Help Cooperative published the 100th edition of the Greensboro Echo Newsletter on October 21, 2009. The newsletter size did not allow electron distribution. Therefore, you will need to visit our website to read all 16 pages. Visit **www.wcshc.com** and click on the 100th edition banner. Please forward your comments to **ftaylor@bellsouth.net**

WCSHC OFFICERS

Frank Taylor

President

ftaylor@bellsouth.net

601-291-2704

Hubert Nicholson

Vice President

hubertnicholson@bellsouth.net

662-736-0497

Dorothy Harper

Youth Director

jeanh29@bellsouth.net

662-312-8004

Omerio Dotson

Treasurer

Carol Williams

Secretary

Gloria Moore

Finance Secretary

Co-op mailing address:

P O Box 23813

Jackson, MS 39225

Phone: 601-291-2704

E-mail ftaylor@bellsouth.net

WCSHC's Conference in 35 Days,

Continued from pg. 1

starts @ 7:30am. The 2010 conference will change your family legacy and help create livability in rural communities. Right here and now in Louisville, MS on January 8-10, 2010, join forces with Winston County Self Help Cooperative to help save rural America. Please read the last page of this newsletter for conference information. You can download registration form and lodging information from co-op website. **www.wcshc.com**. If you need more information, **e-mail: ftaylor@bellsouth.net** or call 601-291-2704.



Participants picked up free seeds and farming magazines

WCSHC's Leadership Training



Fall Cattle Field Day held at Bobby Hardin's farm

By Frank Taylor

The Winston County Self Help Cooperative conducted leadership training on September 27 & 28, 2009 in Louisville, MS. The leadership training focused on identifying opportunities in times of uncertainties and building capacity to ensure success in the 21st century. Individuals from Mississippi and Louisiana worked feverishly devising plans of action to impact communities where they live and work. Topics of discussion included identifying ongoing markets for vegetables, accessing local school cafeterias, building a formidable organization and curtailing juvenile delinquency. Wilson Murray Outreach Specialist for Mississippi's Natural Resources Conservation Service stated, "Each individual should learn ins/outs of the 2008 Farm Bill to enhance their opportunity of succeeding. There are various conservation and incentive programs available for small social disadvantage producers to help create

livability in rural communities. Louisville Mayor, Will Hill elaborated on connecting, mapping and building a resourceful network of service providers to unearth opportunities in small cities and towns. "As a civic leader, we must provide adequate transportation and other infrastructure needs to help small farmers thrive. The City of Louisville started a farmers' market this year with modest success. Therefore, we are encouraging more small producers to participate in 2010." Willie Matthews delivered words of encouragement from Winston County Self Help Cooperative. Matthews declared, "We starts on time and finish before time. WCSHC meetings average 40 minutes with 33 members per session. Our meeting creates excitement with a purpose to help our members maintain ownership of their natural resources and utilize good stewardship practices." The leadership training incorporated WCSHC's Fall Cattle Field Day held at Bobby Hardin's farm. This venue allowed participants to interact with WCSHC members, develop friendships and exchange folklore. Additionally, WCSH Youth Group and Pleasant Ridge Youth participated in the fun filled event. WCSHC Fall Field Day event culminated with a down home fish-fry. WCSHC team members served catfish, cold slaw and sodas. WCSHC's Leadership Training wrapped up on Tuesday morning with participants delivering plans of action to stimulate changes in their communities. Participants talked at length about lessons learned, strategies to increase youth participation and mapping community resources. The Winston County Self Help Cooperative expresses thanks to participants and a special thanks to the Black Belt Community Foundation for funding this exceptional leadership training.

WCSHC receives 12 Heifers for Local Farmers



The group encourages diverse operations including forestry, sheep, cows and chicken farming.

By Joseph McCain

The Winston County Self Help Cooperative continued on its mission "To Save Rural America," Sunday, Oct. 18, 2009 as its members accepted 12 donated heifers for local farmers. The 12 heifers were divided between three WCSHC members. Each farmer will pass-on or donate one heifer to others in the future, usually when the first calf is born to the donated heifer. "Our county is built around agricultural and forestry. This helps our landowners succeed in a down economy," said Frank Taylor of the Winston County Self-Help Cooperative. Steve Baima and Larry Wilcox, two Missouri farmers and Heifer International Volunteers, delivered the 12 cows to the group. The cows were donated by four different farmers in Missouri as part of the "pass-it-on gifts" program of Heifer International. "For more than six decades, passing on the gift has been a cornerstone of Heifer's mission to end hunger and fight poverty,

and these ceremonies are a tradition that becomes even more important during the world economic crisis," said Jo Luck, chief executive officer of Heifer International. Heifer International's mission is to end hunger and poverty while caring for the Earth. Since 1944, Heifer International has provided livestock and environmentally sound agricultural training to improve the lives of those who struggle daily for reliable sources of food and income. Heifer is currently working in more than 50 countries, including the U.S., to help families and communities become more self-reliant. The WCSHC shares this mission and aims to "Save Rural America" through the cooperative efforts of local farmers. The WCSHC has 57 members and are proponents of rural farming. The group encourages diverse operations including forestry, sheep, cows and chicken farming. The group began in 1985 and was revived under the leadership of Frank Taylor in 1997. The group joined the efforts of Heifer International in 2002.

Matriarchs of the 2010 Saving Rural America & Youth Conference



Ozola Echelberger, Age 90



Louise Johnson, Age 88



Mary Hannah, Age 81



Omerio Dotson, Age 80

WCSHC Fall Forestry Field Day

A look inside of WCSHC



Youth participants on small farm

By Frank Taylor

Winston County Self Help Cooperative members, supporters and service providers gathered on October 19, 2009 at Dean Park for the co-op's fall forestry field day. With blue skies and 68 degrees participants started gathering for an informative session on forest management, fire wise and alternative crop on forestland. Co-op member, Jack Miller vocalized words of welcome and gave a brief history of Dean Park for more than 70 individuals. WCSHC conducts quarterly field day events for members to gain hands-on experiences & talked one-on-one with service providers. "These events permit our members to gain insightful knowledge and exchange ideas to improve management skills," according to Michael Hathorn. We invite service providers from USDA, extension and non-

profit organizations to make presentations on current issues affecting our members and supporters. Mississippi Forestry Commission personnel Sandra Ford, Bill Kitchenings, Leslie Blackwell and Tim Reed delivered informative presentations on fire wise and dispersed career orientated information to 40 eager youth. Fire wise program provides tips on building homes in wooded areas and developing pedestrians fire safety plans. USDA personnel Billy Lipsey, FSA and Chuck Lea, NRCS highlighted ongoing sign-ups. Rickey Johnson from Alcorn State University's Extension Program dialogued on growing Shiitake Mushrooms as an alternative crop. Daisy Garrett and Otis Wright updated participants on Mississippi Association of Cooperative's work-plan. WCSHC continues its effort to help save rural America and grooming the next generations of farmers.



Leslie Blackwell, MS Forestry Commission



Rickey Johnson, Alcorn State University



Jim Hancock, Mississippi Forestry Commission

By Frank Taylor

WCSHC members conducted their thirteen business session and outreach meeting on November 2, 2009 at the Louisville Coliseum. Weather conditions propelled excellent attendance. WCSHC's thirteen business session provided an opportunity for members to view and walk through the remodeled Louisville Coliseum. Jean Harper, WCSHC Youth Director said, "We are here to familiarize our members with changes and build momentum towards WCSHC's Saving Rural America and Youth Conference January 8-10, 2010. The conference is brewing excitement and we want to be prepared for the expected and unexpected situations." The thirteen business session started promptly at 3:45pm with 34 members present. Rev. Lee Mark Taylor espoused words of prayer for a successful assembly. The meeting moved swiftly with several key issues discussed from the sale of bulls, Christmas Gala and purchasing feed collectively. WCSHC's outreach meeting started 4:20pm with Jim Hancock & Michael Mathis of the Mississippi Forestry Commission delivering a presentation on cogongrass. They highlighted ways of identifying the invasive grass and methods of controlling growth. Hancock said "cogongrass arrived through the Port of Mobile in 1910. Cogongrass poses a greater threat than kudzu. Therefore, we are working with private landowners to limit the ecological impact on forestland and pastureland. Mississippi Forestry Commission will offer cost share assistance in some counties north of Interstate 20 to help off-set expenses. Members received copies of the 100th edition of The Greensboro Echo Newsletter in newspaper style. The cooperative achieved this historic milestone in nine years. The assembly closed with Elder George Miller requesting grace for participants.

WCSHC's Fire Safety Workshop



Temika Triplett, Betheden Fire Department Fireman

Winston County Self Help Cooperative conducted a fire safety workshop for 35 individuals on November 16, 2009 at Pleasant Grove United Church in Louisville, MS. Mississippi leads the nation in home fire fatalities yearly. Therefore, WCSHC membership continues to help reduce fire fatalities by sponsoring a series of fire safety workshops, according co-op member Thomas Coleman. As cool weather approaches, your heaters need to be checked

by a professional before using. Betheden Fire Department, Chief Randy Livingston and the City of Louisville Fire Chief, Mike Stevens elaborated on a variety of issues to save lives and prevent home fires. Individuals living in rural communities should verify their 911 addresses and post in a visible area. Families should devise escape plans and purchase fire proof safes to secure value documents such as insurance policies, deeds and annuities. Betheden's firemen: Alvin Porter, Gail Triplett, Joel Triplett & Temika Triplett demonstrated techniques of securing perimeter and using fire apparatus. This group of fireman graduated from Mississippi Fire Academy in 2007. The fire safety workshop concluded with Winston County Self Help Cooperative disturbing 20 smoke detectors to needy families. The co-op extends thanks to presenters, Pastor Gage and Pleasant Grove Church family for hosting this event. Additionally, the co-op conveys kudos to co-op members: Lynette Coleman, Gloria Moore and Thomas Coleman for organizing a successful workshop.

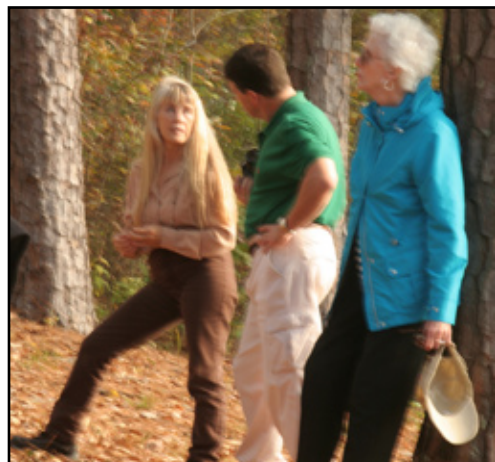
Natural Resource Enterprises Workshop



Jeanne Jones, Mississippi State University

The Winston County Self Help Cooperative co-hosted a natural resource enterprises workshop on Tuesday November 10, 2009 at Legion State Park in Louisville, MS. Eleven co-op members participated in the one-day session. Mississippi State University Department Wildlife and Fishery personnel facilitated activities. The workshop focused on landowners accruing income from their natural resources. Dr. Daryl Jones encouraged participants to be innovated and integrate agro-tourism, hunting and fishing, as ventures to generate income.

Jones stated, "Landowners should couples USDA's cost-share to implement practices and identify other professional services needed to develop a successful enterprise(s)." Dr. Jeanne Jones enthralled participants with a session on wildlife habitat conservation, management and enterprise development. Jeanne said, "Wildlife watching and birding presents an opportunity to create revenues from their acres." Other sponsored included friends of the park and Winston County Extension Office.



WCSHC published 100th Edition

Winston County Self Help Cooperative published the 100th edition of the Greensboro Echo Newsletter on October 21, 2009. The newsletter size did not allow electron distribution. Therefore, you will need to visit our website to read all 16 pages. Visit www.wcsHC.com and click on the 100th edition banner. Please forward your comments to ftaylor@bellsouth.net.

2000 ~ Celebrating the 100th Edition ~ 2009

GREENSBORO ECHO

The Voice of Rural America • The Official Newsletter of the Winston County Self Help Cooperative • www.wcsHC.com

A team committed to 'Save Rural America'

Muses 58 years of love and dedication

2010 SAVING RURAL AMERICA & YOUTH CONFERENCE

JANUARY 8-10 LOUISVILLE, MS

"OPPORTUNITIES IN CHANGING TIMES"

FRANK TAYLOR
FRANK.TAYLOR@WCSHC.COM
PHOTO: FRANK TAYLOR

FRANK TAYLOR
FRANK.TAYLOR@WCSHC.COM

2010 SAVING RURAL AMERICA & YOUTH CONFERENCE

JANUARY 8-10, 2010 LOUISVILLE, MS

FRANK TAYLOR
FRANK.TAYLOR@WCSHC.COM

2010 SAVING RURAL AMERICA & YOUTH CONFERENCE

JANUARY 8-10, 2010 LOUISVILLE, MS

FRANK TAYLOR
FRANK.TAYLOR@WCSHC.COM

NEWS FROM RURAL AMERICA

Page 3, OCTOBER 2009

WCSHC served 1151 individuals



Winston County Self Help Cooperative is a member in helping rural America.

By Frank Taylor
frank.taylor@wcsHC.com

The Winston County Self Help Cooperative is proud to announce that we have served over 1151 individuals in the last year. This is a testament to the hard work and dedication of our members and staff. We are grateful for the support of our community and the success of our programs.

Winston County Self Help Cooperative visits the Hutto's Blueberry Farm



Winston County Self Help Cooperative visits the Hutto's Blueberry Farm.

WCSHC NOVEMBER 2009 CANDID SHOTS



Youth participants on small farm



L-Elder George Miller with fellow Co-op member



WCSHC founders Omerio & Dee Dotson



WCSHC's Fire Safety Workshop participants



E. Orgeon's Doc and Connie Hatfield (M) F. Taylor



WCSHC members attended Fall Field Day



L-WCSHC's Hubert Nicholson & Gloria Moore



Barbara Wyckoff, Andrew Williams, & C. Hatfield



WCSHC member Thomas Coleman



Coach Charles and Martha Figgs-Lexington, KY.



Team Leader Frank Taylor and partners



WCSHC member Lynette Coleman



J.C. Holt-A Plus Marketing Group (Goats)

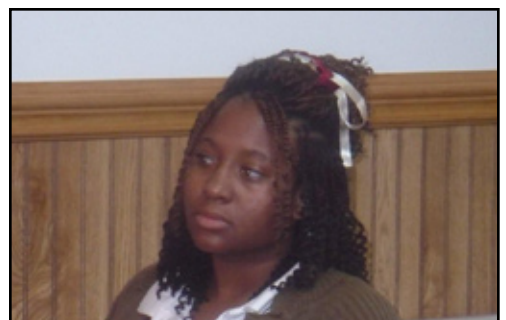
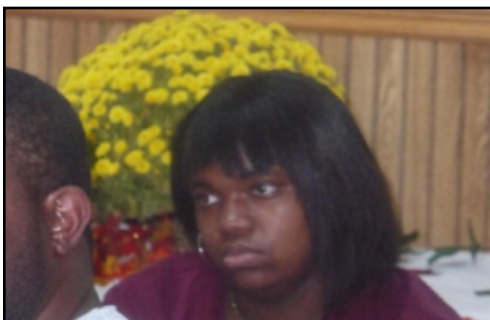
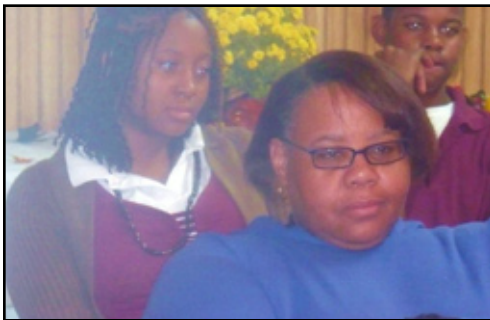


Pumpkins & squash from the fall harvest



East Mississippi Goat Meeting

WCSHC's Fire Safety Workshop Photo Gallery



Winston County Self Help Cooperative Presents the 3rd Annual Saving Rural America & Youth Conference "Opportunities in Changing Times"

January 8, 9, & 10, 2010 Louisville Coliseum-Louisville, MS

Come home and reconnect with Mother Earth's natural resources by learning from experienced farmers, landowners and resource providers. WCSHC will provide an atmosphere of learning, networking and strengthening family values to help save rural communities. Right here and right now is your opportunity to bring your entire family and obtain skills needed to make a positive impact in where you live and work.

Friday's Workshops:

- Tips on Purchasing and Financing Land
- Quilting and Canning Demonstrations
- Carbon Sequestration
- Herd Management
- Youth Conference

Fun Activities:

- Modeling your Farm Clothes
- Storytelling Hour
- Fish Fry
- Gospel Singing

Saturday's Workshops:

- Small Fruits Maintenance
- Backyard Gardening Techniques
- Managing Small Animals (Goats and Sheep)
- Hands on Demonstrations with Animals
- USDA Update
- Marketing Vegetables

Saturday's Special Event:

- Tour of Philadelphia, MS – In 1964; the Slaying of the Three Young Civil Rights Workers James Chaney, Andrew Goodman, and Michael Schwerner took place here.

Sunday's Workshop-Policy Forum:

- Creating Legislation for the 2012 Farm Bill

Leave the 2010 Conference with
FIRE IN YOUR BELLY



SRAC'S 2010 PARTNERS

- Alabama A & M University Center for Forestry and Ecology
- Alcorn State University Extension Program
- Black Belt Foundation
- Federation of Southern Cooperatives
- Heifer International
- Mississippi Association of Cooperatives
- MS-Farm Service Agency
- MS-Natural Resources Conservation Service
- MS-Rural Development
- Mississippi State Extension Service and College of Veterinary Medicine
- National Network of Forest Practitioners
- National Wildlife Federation
- Southern Echo Incorporation
- U.S. Forest Service
- YDABCINC

LODGING INFORMATION

Homegate Inn
851 Metts Street
Louisville, MS 39339
662-773-4005

Lake Tiak-O'khata
213 Smyth Road
Louisville, MS 39339
662-773-7853

Quality Inn, Louisville
201 Highway 15
N. Louisville, MS 39339
662-773-9090
866-538-0187

ENTRY REGISTRATION FORM

Name _____

Address _____ City _____ State _____ Zip _____

Email Address _____

Phone Number _____ Cell Number _____

Name of your Organization _____

Check all that apply: Farm Enterprise _____ Cattle _____ Timber _____ Poultry _____ Sheep _____ Bees _____

Vegetables _____ Swine _____ Orchard _____ Berries _____ Goats _____ Other (Please describe) _____

\$10.00 registration fee for farmers includes meals and materials. USDA, extension, non-profits and foundation personnel \$20.00. Registration deadline December 20, 2009. Visit our website for more conference information www.wcshc.com or contact **Frank Taylor 601-291-2704**.

PLEASE WEAR WARM CASUAL CLOTHES

Complete this Form & Mail along with a Check Payable to:

Winston County Self Help Cooperative

P.O. Box 23813
Jackson, MS 39225

